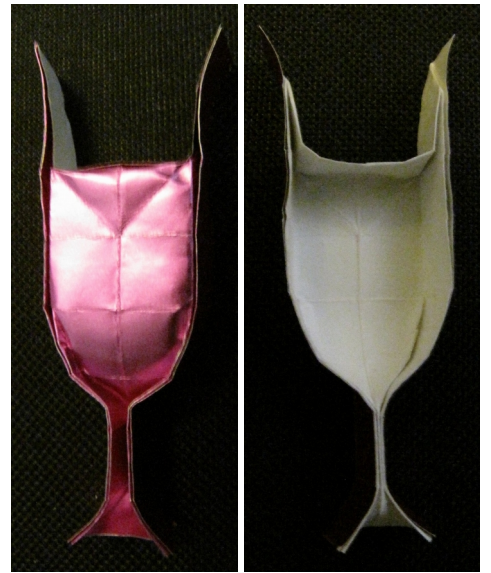


Glass Half Full

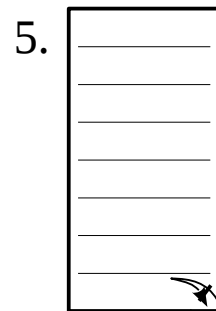
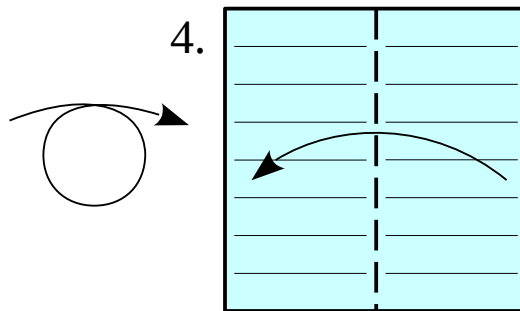
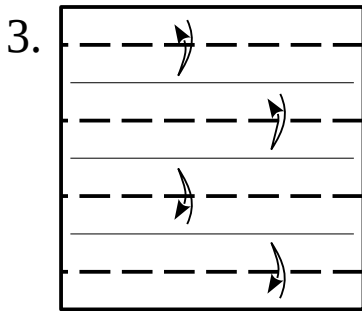
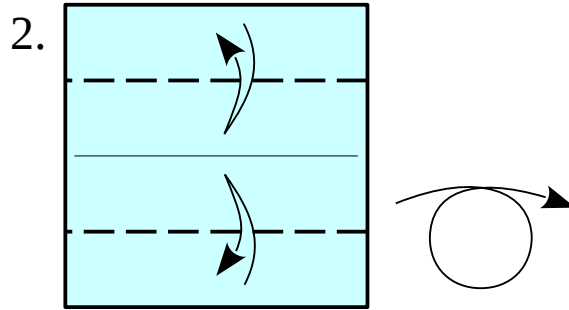
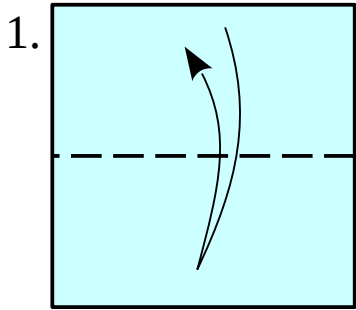
By Wensdy Whitehead

Recommended Paper: 3"-6" (75mm - 150mm)
paper-backed foil square.

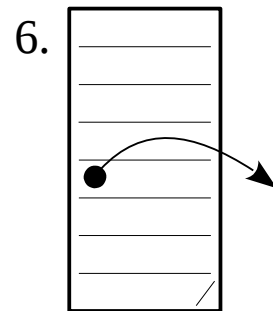


Half full.

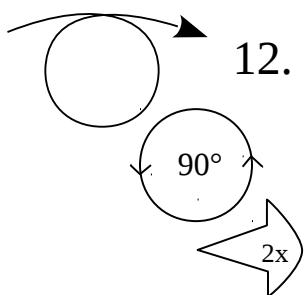
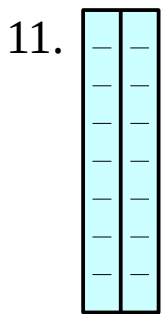
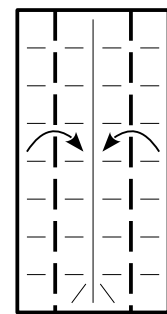
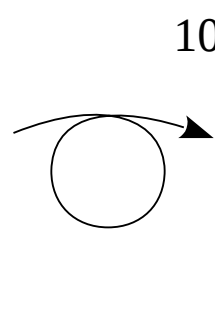
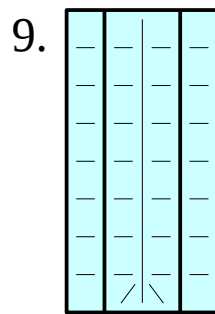
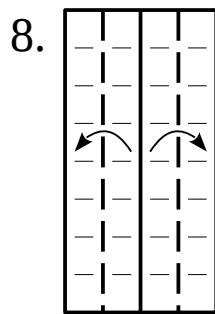
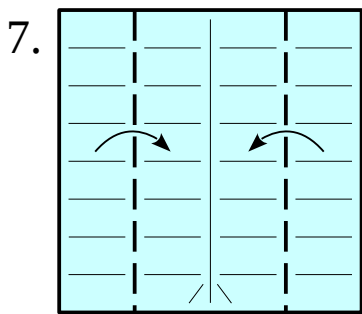
Half empty.



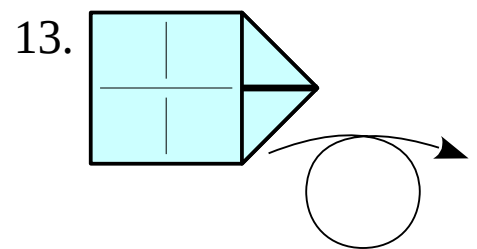
Like a dog-ear, but angled down a bit.



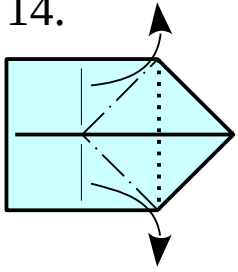
Open back up.



Rabbit-ear. Leave the ear upright.

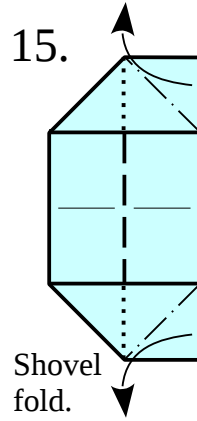


14.

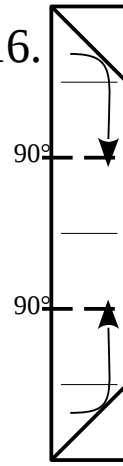


Shovel fold. (Pick up raw and folded edges on the center line and open, passing through a shape that looks like the scoop of a shovel. If you turn the model over while doing this, be sure to turn it back for the next step. These diagrams hold the model in place while the shovel folds flip back and forth.)

15.

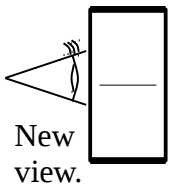


16.

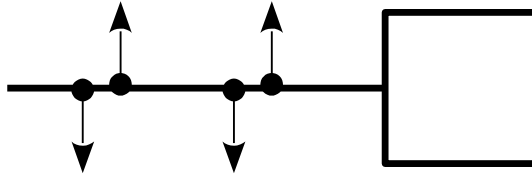


Stand the ends upright.

17.

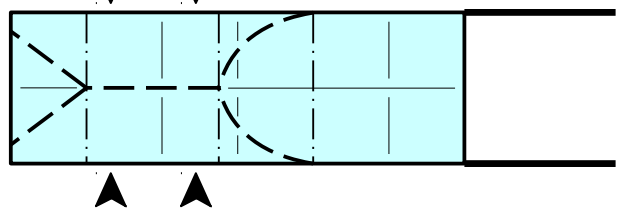


18.



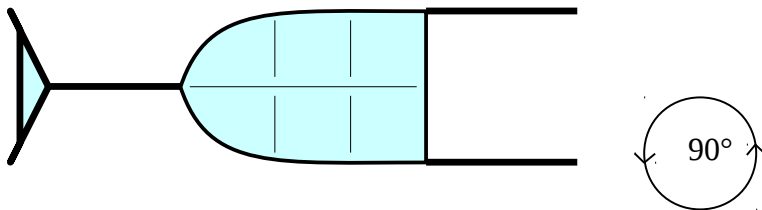
Expand the center.

19.

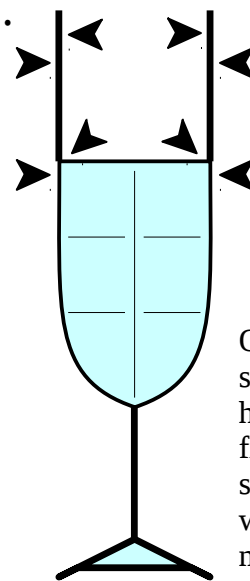


Pinch the stem closed, while keeping the upper section open and rounding the transition area. Use the pre-creases on the left in another rabbit-ear-like move to form the base.

20.

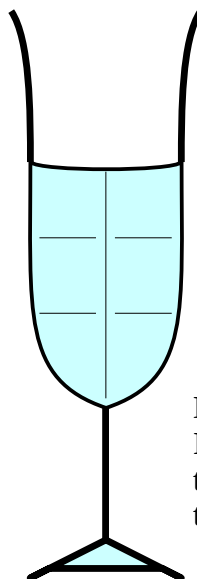


21.



Optionally shape the rim however you see fit. Give the surface of the water a slight meniscus.

22.



Done... but be careful! If you look at it back-to-front, you may see the Glass Half Empty!

